

RECREATIONAL
USERS ONLY



SELF INSPECTION

BOOKLET

Menace Marine
Factory 2/18 Laser Drive
ROWVILLE VIC 3178
www.menacemarine.com.au
Ph: 1300 MENACE
E: sales@menacemarine.com.au

SUITS MOST MENACE MARINE INFLATABLE LIFEJACKETS

YOKE, ALL WEATHER, WAIST BELT

INSTRUCTIONS FOR ANNUAL SELF INSPECTION

RECREATIONAL USE ONLY

First Inspection due 2 years from date of manufacture or 1 year from the date of sale. (which ever comes first)

Recreational users may do a self inspection for 1st and 2nd year, then by an accredited Menace Marine service agent annually thereafter.

Please follow the 10 step inspection plan and complete the form as you go (located at the end of this document next to Step 10).

Replacement Service Kit / Re-Charge Kits are available from Menace Marine: www.menacemarine.com.au

STEP 1

VISUAL INSPECTION

Open up jacket/vest to gain access to the actuator and **remove gas cylinder (and Auto Cartridge if installed):**

Inspect for rust or corrosion. Put to one side until step 4 if no rust or corrosion is found.

Visually check the outside protective cover to check if there is any wear or damage.

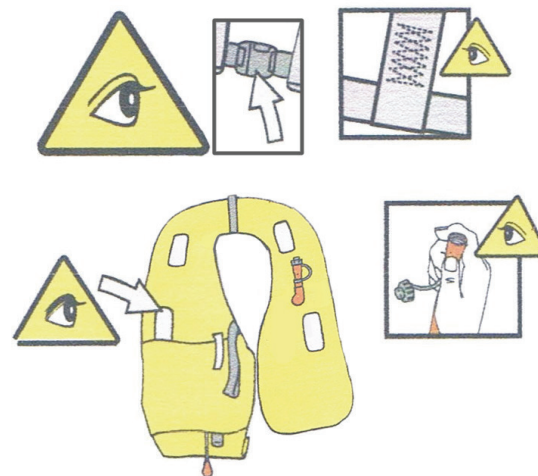
Check all stitching, buckles, closures, and webbing to see all are intact and working correctly.

Check yellow inflation bladder fabric is not damaged.

Check all reflective tape is stuck down and not peeling away.

Check oral inflator tube is not damaged.

Check whistle.



Please read this document fully and ensure that you understand what is required before you start. If you do not understand or do not feel that you can complete all required tasks, please take your jacket to an authorised service agent.

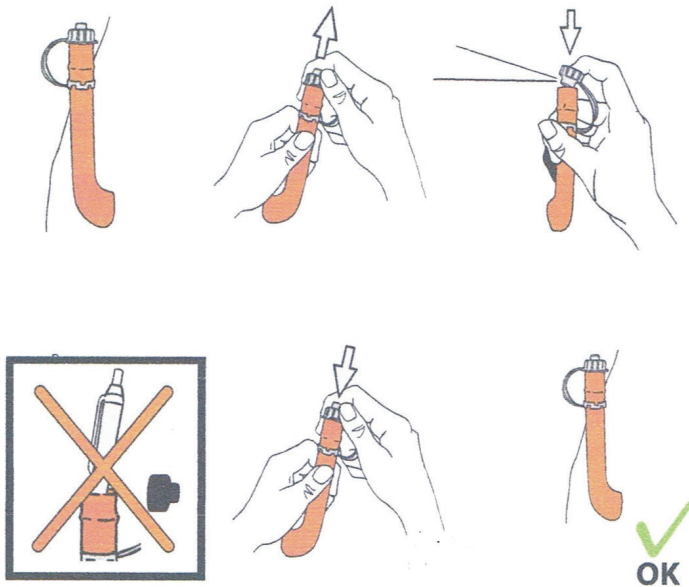
During the self inspection certain replacement parts may be required. Depending on your model of jacket a gas cylinder or automatic firing cartridge may need replacing.

If your inflatable lifejacket or a component fails any test listed, the lifejacket must be taken to an authorised service centre for further testing, or disposed of.

STEP 2

ORAL TUBE CHECK

Check oral tube valve is operating correctly by blowing a small amount of air into the bladder then by inverting the cap into the oral tube to release the valve, and expel all air. Do not insert anything into the valve except the inverted cap. Look for any damage or cracks around or on the oral tube.



STEP 3

TEST BLADDER

Inflate bladder by mouth via oral inflation tube, until bladder is fully inflated and firm. (Must be firm to ensure oral tube valve is sufficiently sealed)

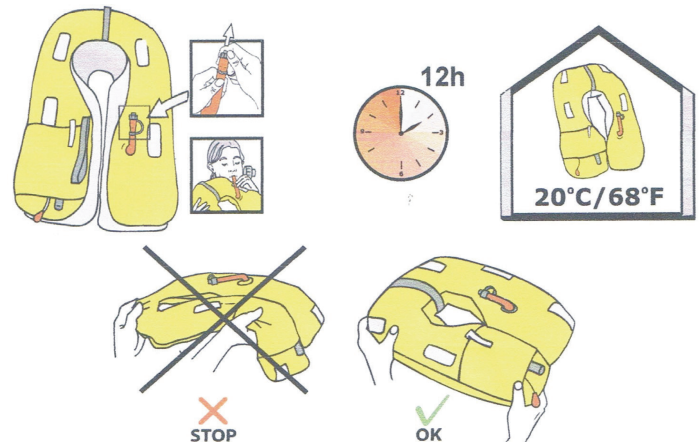
Leave bladder inflated overnight or for at least 12 hrs.

This should be done in an area of stable temperature.

Around 20 deg C is best. (If the temp drops over night it will affect pressure, so make sure the temp remains constant).

After at least 12 hrs, check that the bladder is still firm and there is no loss of pressure.

If bladder has lost pressure do not attempt to repair. Send jacket to an authorized service centre for retesting, or destroy and dispose of the lifejacket.



STEP 4

MANUAL FIRING MECHANISM INSPECTION

Do NOT remove this mechanism from the life jacket!

Ensure CO₂ Cylinder & Auto Cartridge is still removed (as per Step 1)

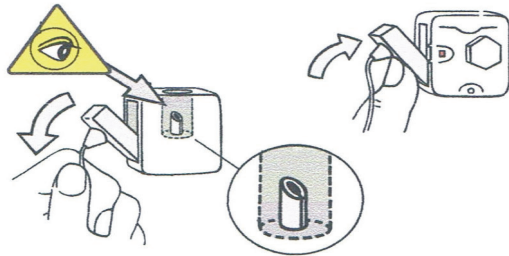
Check firing mechanism is working correctly, pull the inflation ripcord and see if cutter pin rises proud of the internal base of the mechanism.

Once the lever is operating the movement should be smooth.

Observe the indicator marker is red at this time.

Return firing mechanism back to original position.

If operation is not smooth or there is some damage, send the lifejacket to an accredited service agent for repair.



8.



Check the plunger moves freely upwards.

(CO₂ cylinder must still be removed during this step.)

STEP 5

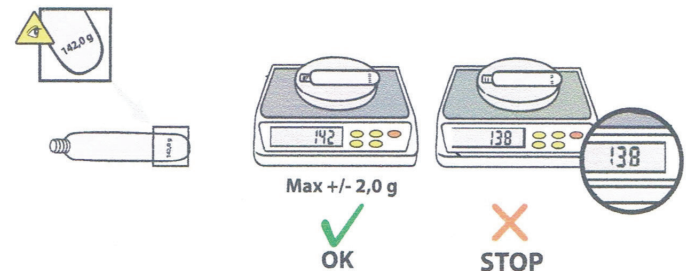
CO₂ CYLINDER INSPECTION

Check gas cylinder is intact and not punctured.

Weigh cylinder to ensure that it is full. The cylinder must weigh within 2 grams of the gross weight stamped on the cylinder. This will require accurate scales that can measure down to 1 gram (supermarket or jewelry scales are ideal). If it is not possible to weigh cylinder this accurately then the cylinder must be replaced with a new one. Record original gross weight and the actual weight on the self test checklist. If the cylinder is damaged or weight is lower than gross weight minus 2 grams then cylinder must be replaced.

Replacements are available from www.menacemarine.com.au

If cylinder is damaged or has been punctured, dispose of it immediately and get a new CO₂ cylinder

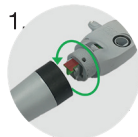





WARNING: Gas cylinders are dangerous goods. They must be kept away from children and not misused.

STEP 6

AUTO INFLATE MECHANISM INSPECTION

This step is only required if you have an Automatic Cartridge installed.

-  Unscrew the automatic activation cartridge counterclockwise from the bottom of the actuator. Check that it is clean and dry.
-  Check expiry date. If expiry date of cartridge is within the next 12 months replace with a new cartridge immediately.

-  Once all steps above are completed, screw cartridge clockwise onto firing mechanism, making sure threads are correct, and tighten by light hand force only. Check that indicator turns green.

NOTE: If indicator remains Red or the Cartridge is out of date, replace the cartridge.

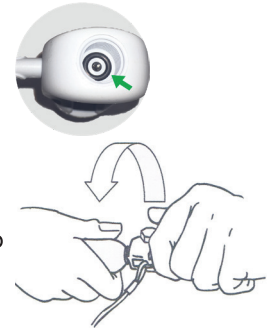
STEP 7

RE-INSTALL CO2 CYLINDER CARTRIDGE

Check o-rings inside firing mechanism are in good condition.

If lifejacket and firing mechanism have passed all tests, re-install CO₂ cylinder.

When fitting cylinder, hold mechanism firmly and screw cylinder in a clockwise direction. Hand tighten only until firmly into position. Indicator should now be green.



STEP 8

RECORD INSPECTION ON YOUR LIFE JACKET

If your jacket has passed all the self inspection points required, use a soft ball point pen to record the inspection on the inspection certificate located near the actuator mechanism on your lifejacket. In addition you can record it in this booklet (Step 10).

Using the prefix SI (Self Inspection) record the date in the following format: SI-DDMMYY, where DDMMYY is the day, month and year. If you did the self inspection on May 4th 2022, record it like this:

Manufactured:	/	Batch #:	Serial #:
Inspected By	Date	Spare Parts Replaced	
John Smith	SI-040522	Replaced CO ₂ Cylinder	

EXAMPLE

STEP 9

REPACK THE LIFE JACKET

Lay bladder and cover on a flat surface, smooth out the bladder to remove all wrinkles and air. Make sure the lifejacket is clean and completely dry, and that the inflation ripcord is not tangled. Ensure you have re-armed the lifejacket according to the instructions and all firing indicators are green on the actuator. Ensure the CO2 cylinder and actuator body is in the protective sheath provided. Carefully pack bladder back inside the valise. *(Refer to folding instructions located on lifejacket bladder.)*

STEP 10

COMPLETE SELF-INSPECTION GRID

Ensure all steps on this form have been completed and that you have signed and dated it. If the lifejacket or a component of the lifejacket fails any checks, the lifejacket or the faulty component must be replaced before further use. Take note of when the next self service is due so that you will not forget to test your lifejacket.

Under no circumstances must you attempt any repairs yourself. This form can be filled out in addition to the one on your lifejacket bladder.

Model:		Designation:	
Manufactured: /		Batch #:	Serial #:
Inspected By	Date	Spare Parts Replaced	

Manufacture Date, Batch, Serial, Model, and Designation can be found printed on lifejacket bladder.

MODEL:		DESIGNATION:		BATCH:		SERIAL:	
LAST SERVICE DATE, OR DATE OF PURCHASE:				D D / M M / Y Y			
1.	General Inspection					PASS	FAIL
1.1	Check cover, closures, straps, and operation of buckle.						
1.2	Check reflective tape, grab strap, operation of whistle and oral inflation tube.						
1.3	Checked safety harness and components (if installed)						
2.	Inspection of bladder					PASS	FAIL
2.1	Checked bladder for abrasion or wear.						
2.2	Performed bladder leakage test (min 12 hours).						
3.	Inspection of oral inflation tube (red mouth tube)					PASS	FAIL
3.1	Checked operation or oral inflation tube and valve.						
4.	Operation of firing mechanism					PASS	FAIL
4.1	Checked operation of valve and check indicator colour.						
5.	Inspection of CO ₂ cylinder					PASS	FAIL
5.1	Inspected CO ₂ cylinder for piercing, damage or corrosion.						
5.2	Printed weight:		grams	Actual weight:		grams	
6.	Inspection and rearming of automatic cartridge (if installed)					PASS	FAIL
6.1	Checked expiry date and green indicators visible. Expiry:					M M / Y Y	
7.	Refit inspected or new CO ₂ cylinder						
8.	Fill in self inspection table on life jacket bladder						
9.	Repack bladder inside cover as per folding instructions on bladder						
10.	I hereby declare that I have inspected and serviced this lifejacket in accordance with the manufacturers instructions described in their Self Inspection Booklet (v15r200522).					D D / M M / Y Y	
					Name	Signature	Date
Download additional checklists from: menacemarine.com.au/self-inspection					Next service due: D D / M M / Y Y		